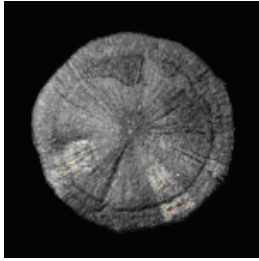
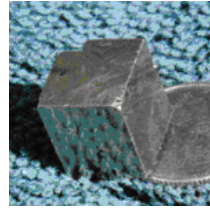

The Contribution of Pyrite

by S. Roger Joyeux



"...beautiful, almost perfectly round, piece of pyrite..."
-©Roger Joyeux, 2007



The Pyrite Cube with a dime -© Roger Joyeux, 2007

Pyrite is fool's gold, but don't be fooled. It does not work with light frequencies. Almost all crystals or minerals work with light, but pyrite does not. Pyrite works with the body's etheric magnetic field, which works with light. "No foolin'!".

HOW IT WORKS...

To be sure that the dots connect, pyrite influences the etheric magnetic field's pattern of configuration, which in turn determines the light that enters the body's form. The etheric field filters light by its magnetic properties of attraction and repulsion.

Pyrite comes in either a roundish or a cube form. The round form can usually be held in One's hand and is the least evolved form. The cube forms are most often small (less than an inch square) or found in clusters. Some cubes are striated on each of their six sides; others are smooth. The smooth variety is the most evolved form.

ROUND PYRITE

From a more practical point of view, I have a very beautiful, almost perfectly round, piece of pyrite that is roughly 3" in diameter. I use it on every crystal layout that I do in a primarily protective capacity. The etheric field can be envisioned as an onion with numerous concentric rings of influence. Pyrite works with the ring of the etherics according to its placement. My placement of the pyrite is normally 18" or so from the body, and nearest to the most significant portal for light in the room, i.e., doors or windows. Is this Feng Shui?

At 18" from the body, the round pyrite's task is simple. It enhances the etheric magnetic field's ability to attract or repel frequencies of light to which it is exposed. In this way, during a crystal layout, the client's body receives frequencies appropriate for its enlightenment and repels those that might cause problems or de-stabilize his or her vibration. Both the attraction and repulsion of light contribute to the person's continuity of well being, growth, and enlightenment.

CUBE PYRITE

The cube varieties are somewhat more complex. Both work primarily, or rather almost exclusively, with the third eye. The one with striations on each of its six sides is largely intended to "direct" thought patterns. Each of the six sides affects the third eye to influence a single concept or subject, different from the subject matter of each of the other sides. The cube, as a whole, deals with an overall area of study, and each of the six sides contributes to that area.

Each cube is set up to re-order the myriad of the mind's thoughts related to a particular conceptual framework or subject matter. Thoughts are then broken down into particular subject areas and regrouped in an orderly way. Each striation of a given side influences the etheric magnetic field that deals with a range of light frequencies that constitute a singular subject within the overall conceptual framework of that side. The presence of several striations infers several thoughts about the common subject.

As each side is striated, thoughts on six different, yet closely related subject areas are directed by the pyrite. The etheric field of the mind is reordered or reprogrammed by the striations of the cube. Thinking, then, follows lines of discernment according to the patterns of etheric influence generated by the pyrite. The etheric field of the mind is reordered or reprogrammed by the striations of the cube. Thinking, then, follows lines of discernment according to the patterns of etheric influence generated by the pyrite. Light moves in the ways that the reprogrammed etherics allow, and the individual comes under the influence of beliefs and perceptions that conform to the light movement.

The difference between the less evolved striated cube shape of pyrite, and the more evolved smooth-sided cube, is one of directed thought versus synthesis of thought. The smooth sided cube does not limit the parameters of the etheric patterns, and therefore, does not restrict, channel, or direct the parameters of conceptual thinking. The concepts within each subject area are allowed to mix and merge thus synthesizing individual thoughts into the larger whole. Smooth pyrite does not prevent the crossover of light frequencies. Striated pyrite inhibits the crossover of frequencies and prevents the crossover of ideas. Smooth pyrite then expands thought into larger,

more complete concepts. In effect, light frequencies that are the raw materials of thought combine as an action of synthesis.

To use either type of cube pyrite, tape it to your forehead, especially when contemplating complex ideas. The striated pyrite will direct thought along avenues not previously considered, and the smooth variety will help the user to grasp the intricacies of the overall picture of difficult ideas.

Footnote from Roger: Many times, as I sat to write my books, I taped smooth cube pyrite to my forehead. Did it help? Well, check our website, <http://www.angelsandancestors.com/tsol.html>. The first book is available, and the second will be out soon.

-©Roger Joyeux. Roger is a light worker, healer, writer, and speaker. He journeyed to the Siddha Yoga ashram in Ganespuri, India in 1990; he danced the alignment of Earth at the 11:11 in Egypt in 1992; he channeled Archangel Michael at the Conclave of the Mother in 1994 at Mount Shasta; and he has created light stations in Alberta.